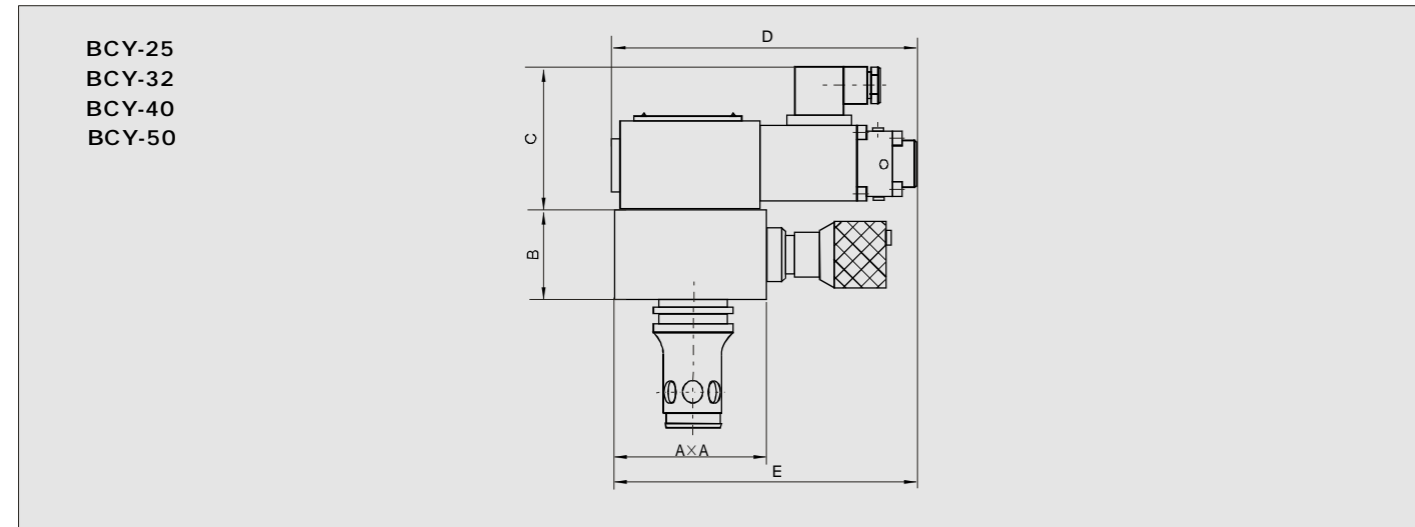


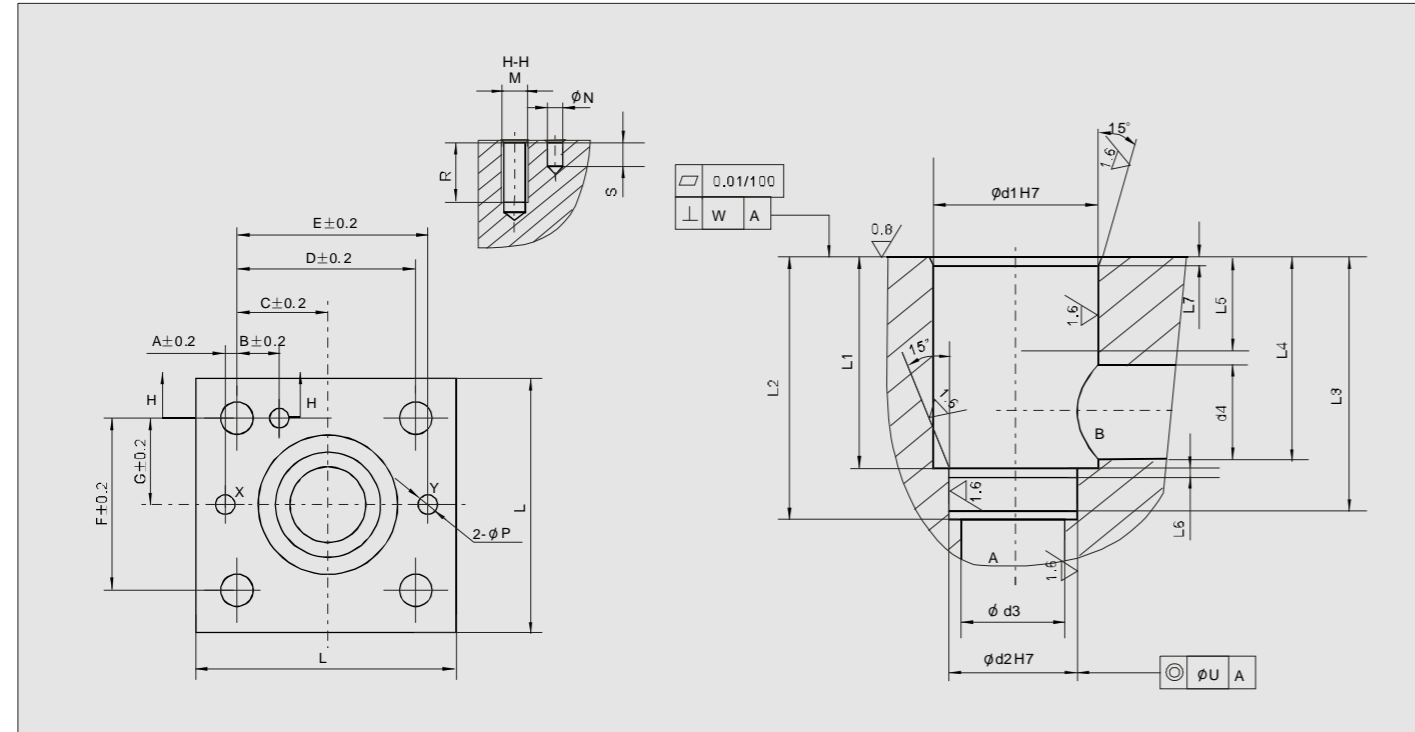
Proportional cartridge relief valve

外形尺寸 Outside size



型号 Model	A	B	C	D	E	紧固螺钉 Fixing screw
BCY-25	85	40	80	168.5	168.5	4-M8
BCY-32	102	50	80	168.5	176	4-M16
BCY-40	125	60	80	168.5	188.5	4-M20
BCY-50	140	68	80	168.5	196	4-M20

安装尺寸 Mounting size



盖板安装面和阀套尺寸 Cover installation surface and valve sleeve size

型号 Size	盖板安装面 Cover installation surface											插装孔 Cavity size														
	A	B	C	D	E	F	G	L	M	N	P	R	S	d1	d2	d3	d4	L1	L2	L3	L4	L5	L6	L7	U	W
BCY-25	4	13	29	58	62	58	29	85	M12	6	6	30	8	45	34	25	27	58	72	70	57	30	2.5	2.5	0.03	0.05
BCY-32	6	18	35	70	76	70	35	102	M16	6	8	38	8	60	45	32	38.5	70	85	83	68.5	30	2.5	2.5	0.03	0.1
BCY-40	7.5	19.5	42.5	85	92.5	85	42.5	125	M20	6	10	46	8	75	55	40	54.5	87	105	102	84.5	30	3	3	0.05	0.1
BCY-50	8	20	50	100	108	100	50	140	M20	8	10	46	8	90	68	50	62.5	100	122	117	97.5	35	3	3	0.05	0.1

Proportional cartridge restrictive valve

技术参数 Technical specification

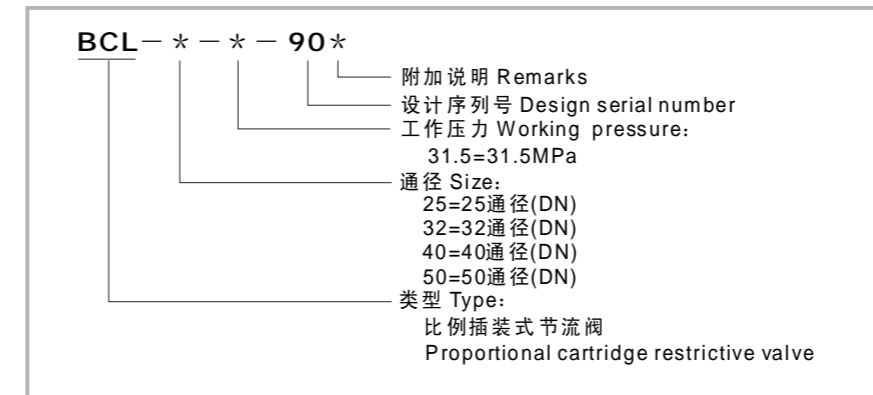
通径 Model	25	32	40	50
主阀工作压力 Maximum pressure (MPa)	31.5			
最大流量 Maximum flow (l/min)	210	320	500	1000
滞环 Hysteresis (%)	< 5			
重复精度 Repeatability (%)	< 1			
额定电流 Rated current (mA)	800			
过滤精度 Filtration accuracy	≤ 20			
液压介质 Hydraulic fluid	矿物质液压油、磷酸酯液压油 Mineral Oil, Phosphate-ester			
介质粘度范围 Viscosity (mm ² /s)	2.8~100			
介质温度范围 Fluid temp. (°C)	-20~70			



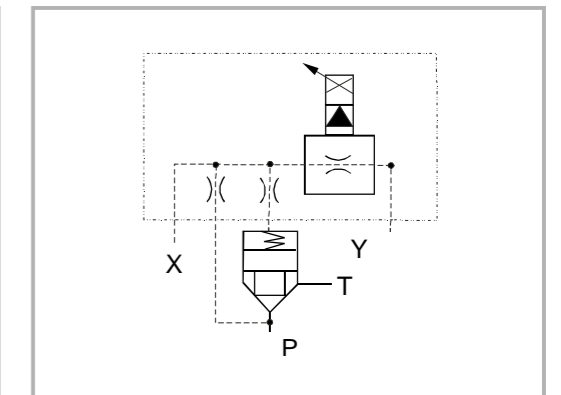
BCL型2通式比例节流插装阀，根据输入电信号大小进行流量控制。该阀响应时间快，动态性能好，广泛应用于注塑机、吹塑机、铸造机械、钢厂设备等领域。

The BCL model is a cartridge type, 2-way proportional restrictive valve, which controls the flow rate according to the value of electrical signal. With a quick response time and good dynamic performances, it is widely used in injection molding machines, blowing machines, die-casting machines and equipment in steel works.

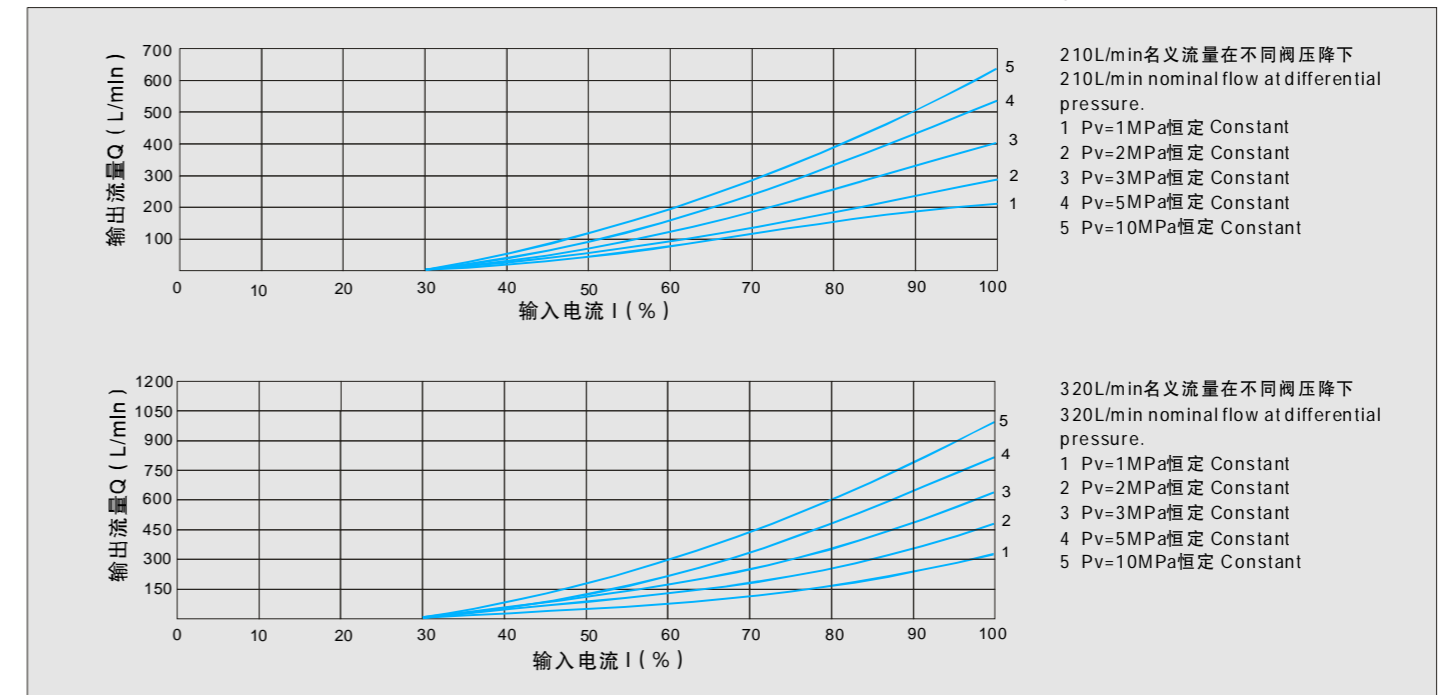
型号说明 Model instruction



机能符号 Code symbol

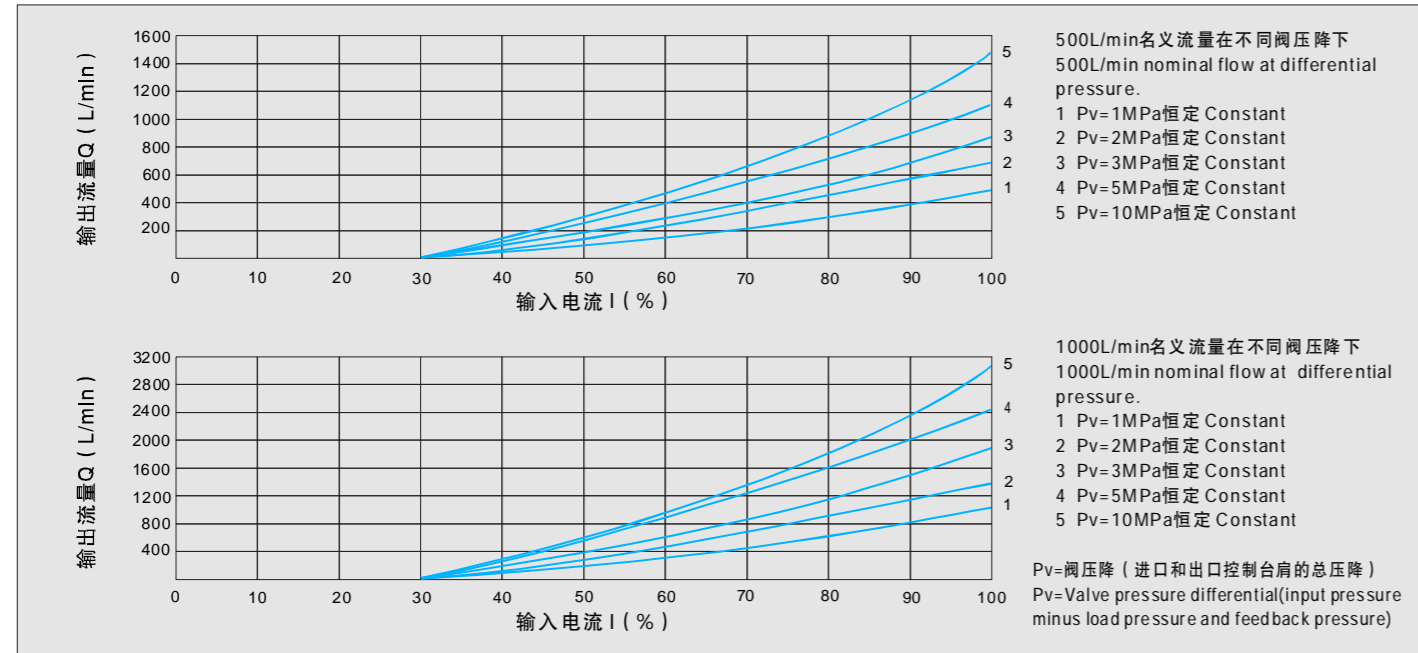


25、32、40、50型特性曲线 (试验条件 $v=36 \times 10^{-6} \text{m}^2/\text{S}$ $t=50^\circ\text{C}$) Model Characteristic Curves (Testing Condition $v=36 \times 10^{-6} \text{m}^2/\text{S}$ $t=50^\circ\text{C}$)

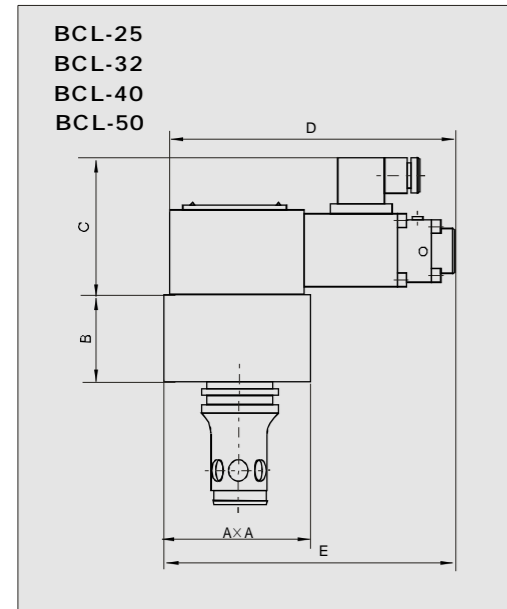


Proportional cartridge restrictive valve

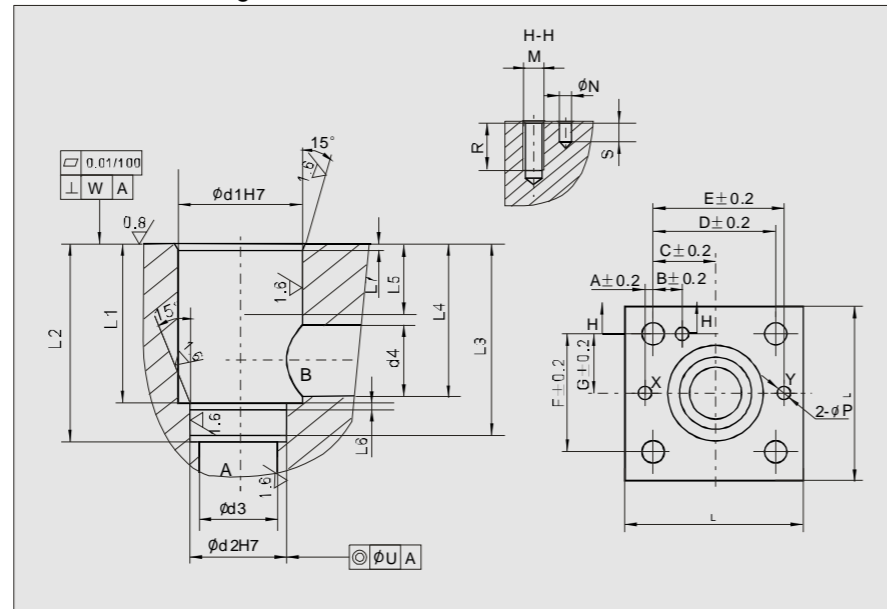
25、32、40、50型特性曲线 (试验条件 $v=36 \times 10^{-6} \text{m}^2/\text{S}$ $t=50^\circ\text{C}$) Model Characteristic Curves (Testing Condition $v=36 \times 10^{-6} \text{m}^2/\text{S}$ $t=50^\circ\text{C}$)



外形尺寸 Mounting size



安装尺寸 Mounting size



型号 Model	A	B	C	D	E	紧固螺钉 Fixing screw
BCL-25	85	40	80	166	168.5	4M8
BCL-32	100	50	80	166	176	4M16
BCL-40	125	60	80	166	188.5	4M20
BCL-50	140	68	80	166	196	4M20

盖板安装面和阀套尺寸 Cover installation surface and valve sleeve size

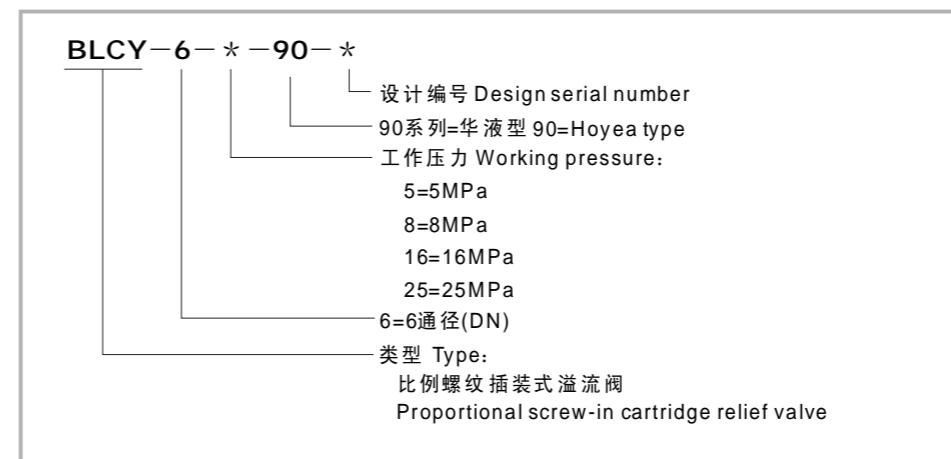
型号 Size	盖板安装面 Cover installation surface										插装孔 Cavity size															
	A	B	C	D	E	F	G	L	M	N	P	R	S	d1	d2	d3	d4	L1	L2	L3	L4	L5	L6	L7	U	W
BCL-25	4	13	29	58	62	58	29	85	M12	6	6	30	8	45	34	25	27	58	72	70	57	30	2.5	2.5	0.03	0.05
BCL-32	6	18	35	70	76	70	35	102	M16	6	8	38	8	60	45	32	38.5	70	85	83	68.5	30	2.5	2.5	0.03	0.1
BCL-40	7.5	19.5	42.5	85	92.5	85	42.5	125	M20	6	10	46	8	75	55	40	54.5	87	105	102	84.5	30	3	3	0.05	0.1
BCL-50	8	20	50	100	108	100	50	140	M20	8	10	46	8	90	68	50	62.5	100	122	117	97.5	35	3	3	0.05	0.1

Proportional screw-in cartridge relief valve

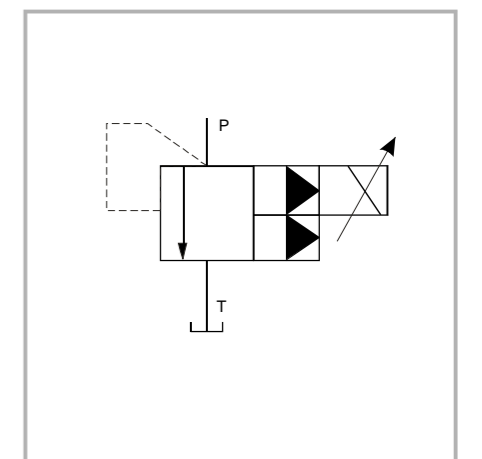


BLCY型比例溢流阀是螺纹插装式的先导式溢流阀，可以作中小流量液压系统的压力控制阀，根据输入电流的大小比例控制系统压力。

型号说明 Model instruction



机能符号 Code symbol



特性曲线 (试验条件 $v=36 \times 10^{-6} \text{m}^2/\text{S}$ $t=50^\circ\text{C}$) Characteristic Curves (Testing Condition $v=36 \times 10^{-6} \text{m}^2/\text{S}$ $t=50^\circ\text{C}$)

