



技术参数 Technical specification

| | | | | |
|---------------------------------------|---|-----|------|------|
| 通 径 Model | 25 | 32 | 40 | 50 |
| 压力等级 Working pressure (Mpa) | 8, 16, 25, 31.5 | | | |
| 最大流量 Maximum flow (l/min) | 400 | 750 | 1000 | 2000 |
| 滞 环 Hysteresis (%) | < ± 1.5 | | | |
| 重复精度 Repeatability (%) | < ± 2 | | | |
| 额定电流 Rated current (mA) | 800 | | | |
| 过滤精度 Filtration accuracy (um) | ≤ 20 | | | |
| 液压介质 Hydraulic fluid | 矿物质液压油、磷酸酯液压油 Mineral Oil, Phosphate-ester | | | |
| 介质粘度范围 Viscosity (mm ² /s) | 2.8~100 | | | |
| 介质温度范围 Fluid temp(°C) | -20~70 | | | |

BCY型插装式比例溢流阀，根据输入电信号大小进行压力控制。该阀响应时间快，动态性能高，广泛应用于注塑机、吹塑机、铸造机械、钢厂设备等领域。

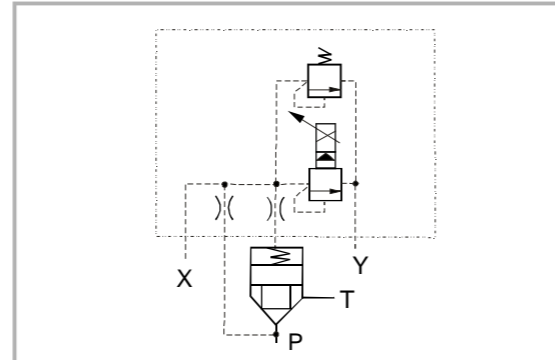
The BCY model, a cartridge type proportional relief valve, controls the pressure according to the value of electrical signal input. With a quick response time and good dynamic performances, it is widely used in injection molding machines, blowing machines, die-casting machines and equipment in steel works.

型号说明 Model instruction

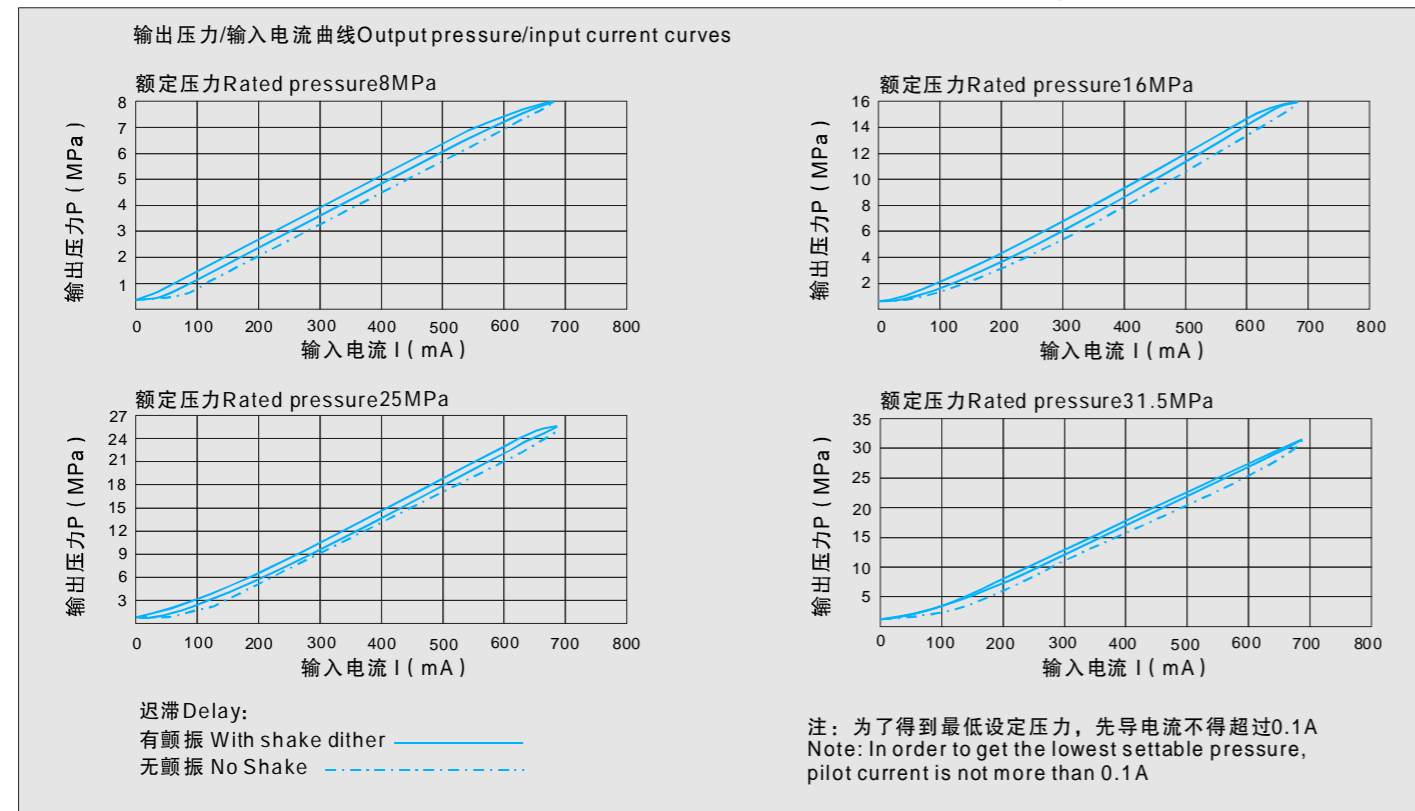
BCY- * - * - 90 *

- 附加说明 Remarks
- 设计序列号 Design serial number
- 工作压力: Working pressure:
8=8MPa 16=16MPa
25=25MPa 31.5=31.5MPa
- 通径 Size:
25=25通径(DN) 32=32通径(DN)
40=40通径(DN) 50=50通径(DN)
- 类型 Type:
比例插装式溢流阀
Proportional cartridge relief valve

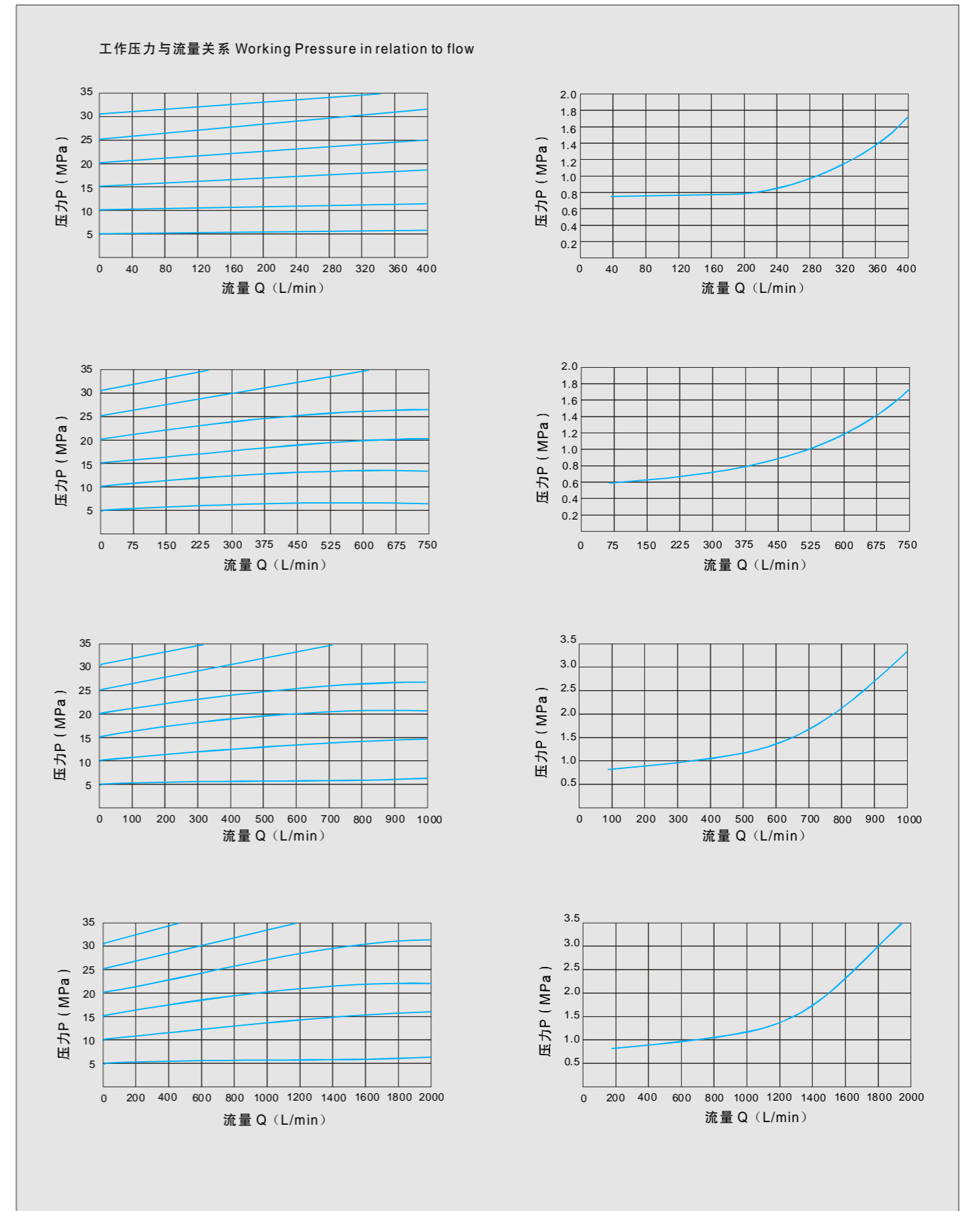
机能符号 Code symbol



25、32、40、50型特性曲线 (试验条件 $v=36 \times 10^{-6} \text{m}^2/\text{S}$ $t=50^\circ\text{C}$) Model Characteristic Curves (Testing Condition $v=36 \times 10^{-6} \text{m}^2/\text{S}$ $t=50^\circ\text{C}$)

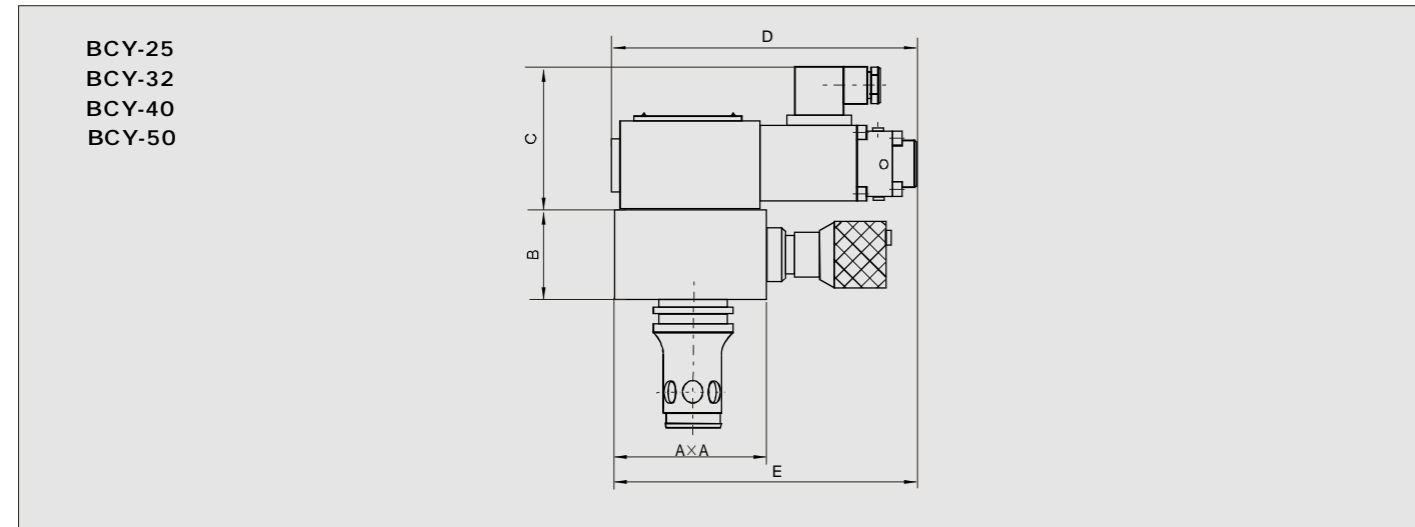


25、32、40、50型特性曲线 (试验条件 $v=36 \times 10^{-6} \text{m}^2/\text{S}$ $t=50^\circ\text{C}$) Model Characteristic Curves (Testing Condition $v=36 \times 10^{-6} \text{m}^2/\text{S}$ $t=50^\circ\text{C}$)



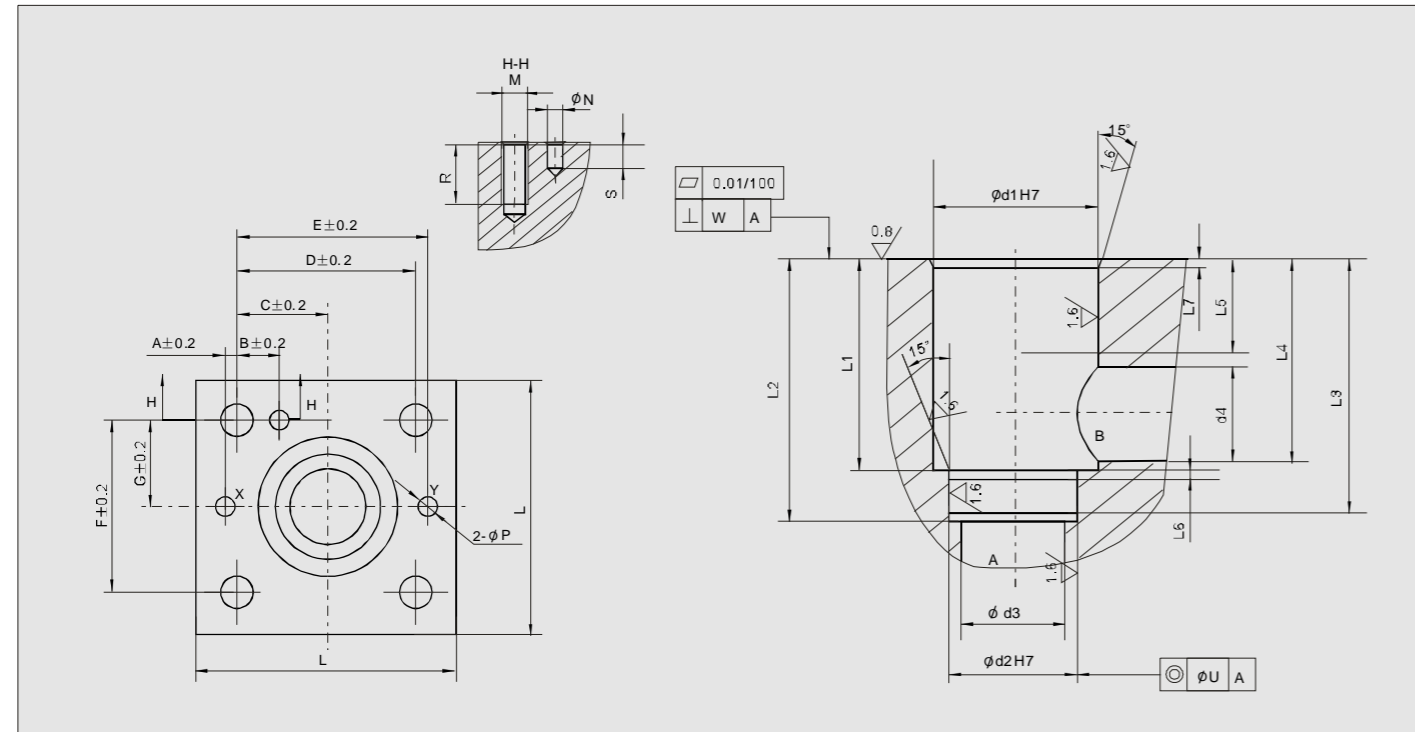
Proportional cartridge relief valve

外形尺寸 Outside size



| 型号 Model | A | B | C | D | E | 紧固螺钉 Fixing screw |
|----------|-----|----|----|-------|-------|-------------------|
| BCY-25 | 85 | 40 | 80 | 168.5 | 168.5 | 4-M8 |
| BCY-32 | 102 | 50 | 80 | 168.5 | 176 | 4-M16 |
| BCY-40 | 125 | 60 | 80 | 168.5 | 188.5 | 4-M20 |
| BCY-50 | 140 | 68 | 80 | 168.5 | 196 | 4-M20 |

安装尺寸 Mounting size



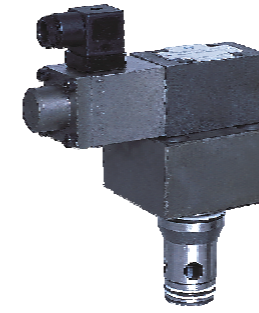
盖板安装面和阀套尺寸 Cover installation surface and valve sleeve size

| 型号 Size | 盖板安装面 Cover installation surface | | | | | | | | | | | 插装孔 Cavity size | | | | | | | | | | | | | | |
|---------|----------------------------------|------|------|-----|------|-----|------|-----|-----|---|----|-----------------|---|----|----|----|------|-----|-----|-----|------|----|-----|-----|------|------|
| | A | B | C | D | E | F | G | L | M | N | P | R | S | d1 | d2 | d3 | d4 | L1 | L2 | L3 | L4 | L5 | L6 | L7 | U | W |
| BCY-25 | 4 | 13 | 29 | 58 | 62 | 58 | 29 | 85 | M12 | 6 | 6 | 30 | 8 | 45 | 34 | 25 | 27 | 58 | 72 | 70 | 57 | 30 | 2.5 | 2.5 | 0.03 | 0.05 |
| BCY-32 | 6 | 18 | 35 | 70 | 76 | 70 | 35 | 102 | M16 | 6 | 8 | 38 | 8 | 60 | 45 | 32 | 38.5 | 70 | 85 | 83 | 68.5 | 30 | 2.5 | 2.5 | 0.03 | 0.1 |
| BCY-40 | 7.5 | 19.5 | 42.5 | 85 | 92.5 | 85 | 42.5 | 125 | M20 | 6 | 10 | 46 | 8 | 75 | 55 | 40 | 54.5 | 87 | 105 | 102 | 84.5 | 30 | 3 | 3 | 0.05 | 0.1 |
| BCY-50 | 8 | 20 | 50 | 100 | 108 | 100 | 50 | 140 | M20 | 8 | 10 | 46 | 8 | 90 | 68 | 50 | 62.5 | 100 | 122 | 117 | 97.5 | 35 | 3 | 3 | 0.05 | 0.1 |

Proportional cartridge restrictive valve

技术参数 Technical specification

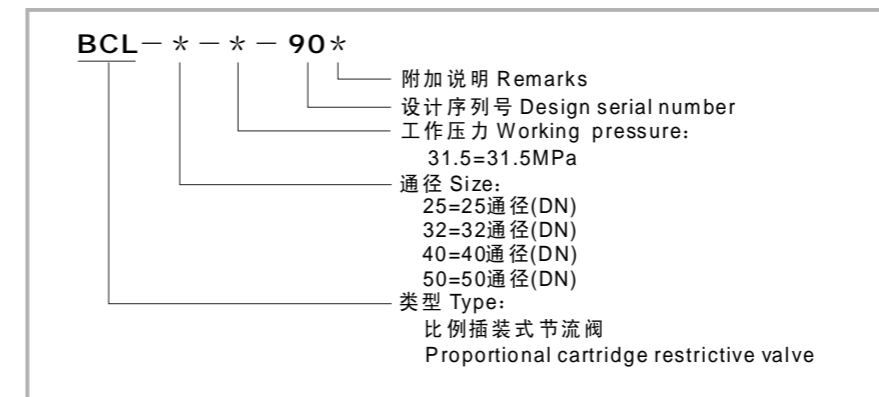
| 通径 Model | 25 | 32 | 40 | 50 |
|---------------------------------------|---|-----|-----|------|
| 主阀工作压力 Maximum pressure (MPa) | 31.5 | | | |
| 最大流量 Maximum flow (l/min) | 210 | 320 | 500 | 1000 |
| 滞环 Hysteresis (%) | < 5 | | | |
| 重复精度 Repeatability (%) | < 1 | | | |
| 额定电流 Rated current (mA) | 800 | | | |
| 过滤精度 Filtration accuracy | ≤ 20 | | | |
| 液压介质 Hydraulic fluid | 矿物质液压油、磷酸酯液压油 Mineral Oil, Phosphate-ester | | | |
| 介质粘度范围 Viscosity (mm ² /s) | 2.8~100 | | | |
| 介质温度范围 Fluid temp. (°C) | -20~70 | | | |



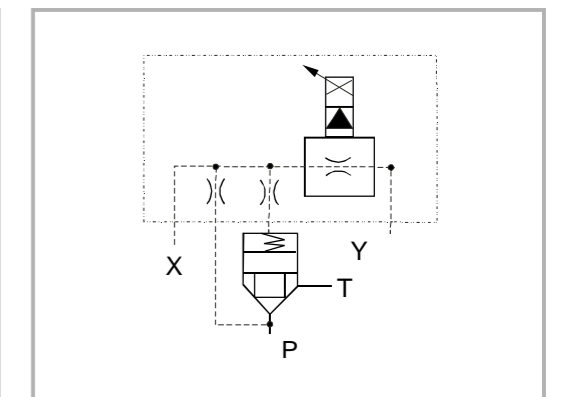
BCL型2通式比例节流插装阀，根据输入电信号大小进行流量控制。该阀响应时间快，动态性能好，广泛应用于注塑机、吹塑机、铸造机械、钢厂设备等领域。

The BCL model is a cartridge type, 2-way proportional restrictive valve, which controls the flow rate according to the value of electrical signal. With a quick response time and good dynamic performances, it is widely used in injection molding machines, blowing machines, die-casting machines and equipment in steel works.

型号说明 Model instruction



机能符号 Code symbol



25、32、40、50型特性曲线 (试验条件 $v=36 \times 10^{-6} \text{m}^2/\text{S}$ $t=50^\circ\text{C}$) Model Characteristic Curves (Testing Condition $v=36 \times 10^{-6} \text{m}^2/\text{S}$ $t=50^\circ\text{C}$)

